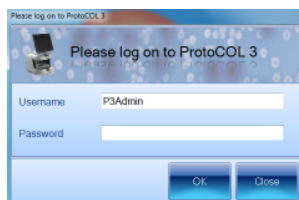


ProtoCOL 3 Antibiotic Susceptibility - Batch Set-Up Quick Guide

1 Start ProtoCOL 3 software

Enter



➔ Log onto ProtoCOL 3

2 Position plate

➔ Insert the plate holder, ensuring the plate holder that gives the best contrast between the zone and background is used

➔ Place plate onto plate holder

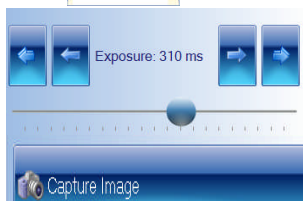
3 Capture image

Click



Slide

Click



➔ Select the image tab and check the live box

➔ Adjust the exposure by increasing/decreasing the sliding scale

➔ Capture image

4 Create batch

Click



➔ Click New Batch

5 Plate configuration

Select



➔ Select Plate Configuration to set plate size and sample volume. Default are circular plate, 90mm, sample volume 1mL. Change if necessary

6 Choose an application

Select



➔ Select Antibiotic Susceptibility

7 Name the batch

Enter

Designing Batch:

➔ Name the batch

8 Zone classification

Select



Click

☒ Move Individual Zones

Click

Rename Zones...

- ➔ Select Zone Classification tab
- ➔ Select type of zone frame and the number of zones required
- ➔ Position the grid directly over the zones. To move individual measuring circles check the box and setting circle to the maximum zone size
- ➔ Zones can also be named on this page by clicking rename zones

9 Discs/wells present

Enter

Diameter (mm)

10.00



or



- ➔ Indicate whether discs or wells are present
- ➔ If a well or disc is present enter the size of disc/well by entering the size directly into the box or by clicking on the text box and drag the circle to the edge of the well or disc
- ➔ Click Next

10 Identify zones

Sample



Sample

Sample

- ➔ From Image click on an area of the disc or well to pick colour, repeat for zone and the background. Be sure to take representative samples from across the plate
- ➔ Click Next

11 Review zone measurements

Click



- ➔ If all zones are detected click Finish, if not repeat step 8 and ensure all of the zones are central

12 Measure

Click



Click



Click



- ➔ Select Measure tab
- ➔ Test Measure Plate
- ➔ Assign a plate ID
- ➔ Accept batch

ProtoCOL 3 is now ready to make the first measurement

CONTACT SYNBIOSIS:
EUROPE:
Tel: +44 (0)1223 727125
Email: support@synbiosis.com

USA:
Tel: 800 686 4451/301 662 2863
Email: support@synbiosis.com

www.synbiosis.com
P3ASTBSU1211